

The Center for Network Culture at the IT University of Copenhagen welcomes you to their first symposium on:

Net-Cultures: Mobility and Location in Social Networks

Friday, April 29, 2011 9:00 AM
IT University of Copenhagen, Rued Langgaards Vej 7, 2300 København S

Invited speakers:
Mimi Swibel, keynote (Drexel University, USA),
Ana Maria Nicolaci-da-Costa (PUC-RI, Brazil),
Christiane Ljungqvist (Telecom Research, France) and
Larissa Höpfl (RMIT University, Australia).




#netcultures

CNC Symposium | IT University of Copenhagen | April 29, 2011

NetLocality

Location-aware technologies as interfaces of hybrid spaces



Adriana de Souza e Silva | Associate Professor | IT University of Copenhagen / NC State University

Net Locality

Net Locality

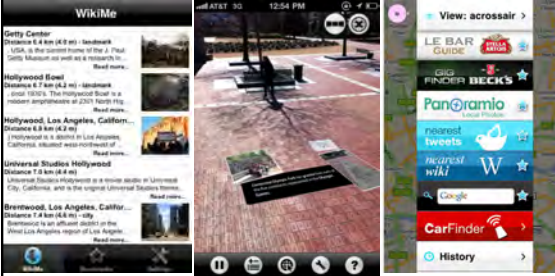
The Internet is brought into public spaces



(Gordon & de Souza e Silva, 2011)

Net Locality

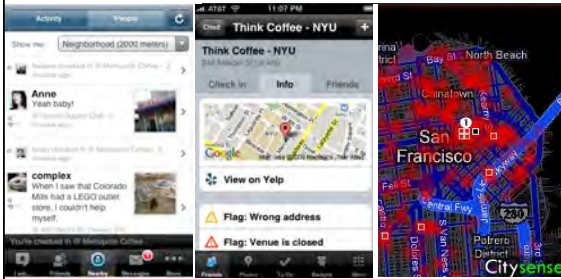
Location-based services



WikMe, Argon, Geopedia, Yelp, Radar, Waze, Where, etc. etc.

Net Locality

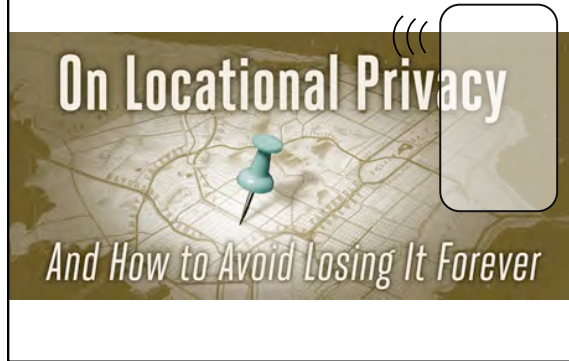
Location-based social networks, location-based mobile games



Loopt, Brightkite, Whirl, Foursquare, Gowalla, Botfighters, Mogi, City Sense, etc. etc.

Net Locality: Privacy / Surveillance

Locational Privacy



Net Locality: Privacy / Surveillance

Governmental "top-down" surveillance



Net Locality: Privacy / Surveillance

Governmental "top-down" surveillance



Net Locality: Privacy / Surveillance

Corporate "top-down" surveillance



Net Locality: Privacy / Surveillance

Collateral surveillance



(de Souza e Silva & Friih, 2010, Humphreys, 2010)

Net Locality: Privacy / Surveillance

Collateral surveillance



Net Locality: Privacy / Surveillance

Locational Privacy

Will people become more comfortable sharing their location?

Will the ability to broadcast locations influence how people understand the locational privacy?

Net Locality: Privacy / Surveillance

Locational Privacy

Location is not inherently private – it's contextual

(Solove, 2004; 2008)

Net Locality: Power / Surveillance

Collateral surveillance / Power asymmetry



Mogi, Japan (2003)

(Licoppe & Inada, 2006; Licoppe & Guillot, 2006; Licoppe & Inada, 2009)

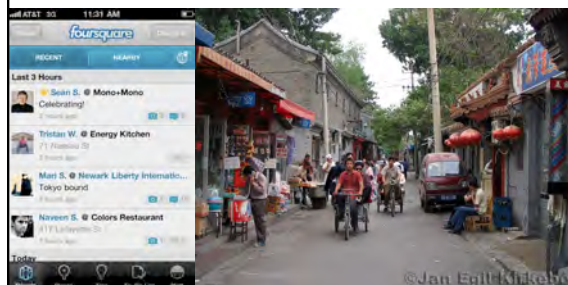
Net Locality: Power / Control

Will the ability to control digital information attached to location lead to increased over-filtered public spaces?



Net Locality: Power / Control

Does net locality lead to homogenous spaces, filtered to our individualized needs?



Net Locality: Public Spaces



Net Locality: Public Spaces

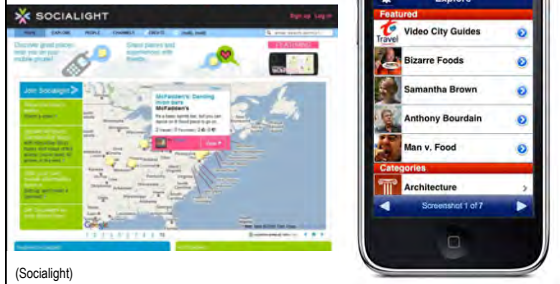
Presentation of self through location



Net Locality: Public Spaces

Presentation of location

The potential to highlight and access dynamic aspects of a location depending on the interface used to interact with that location



Net Locality: Public Spaces



Thank you!

NEXT: Mimi Sheller's keynote speech